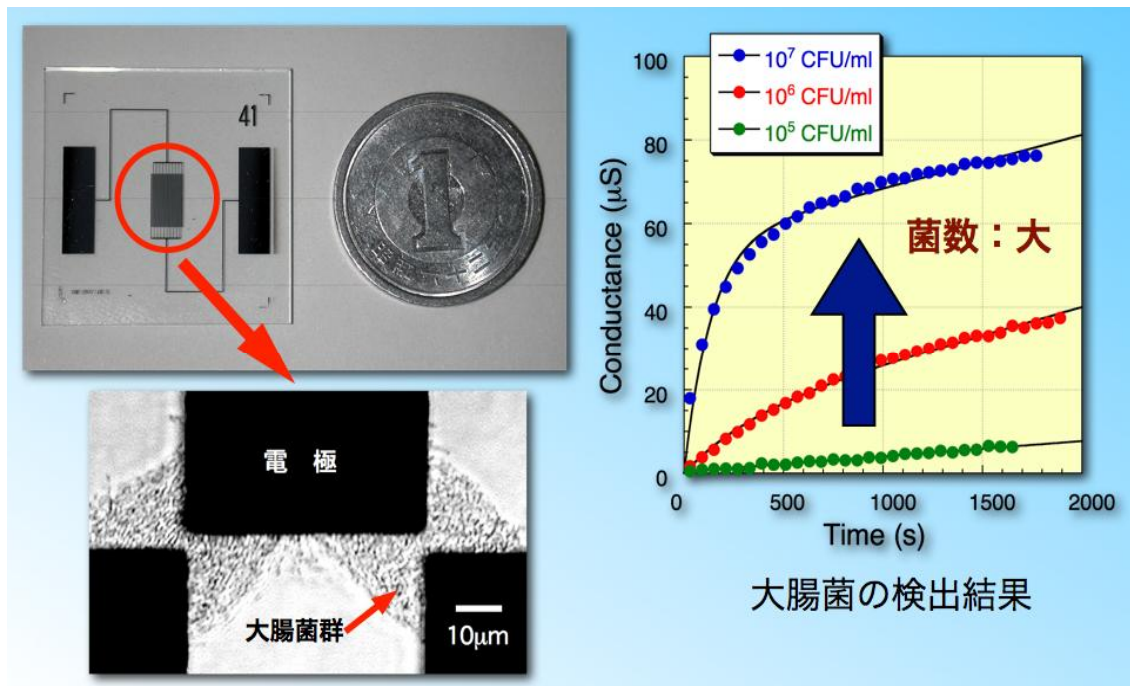
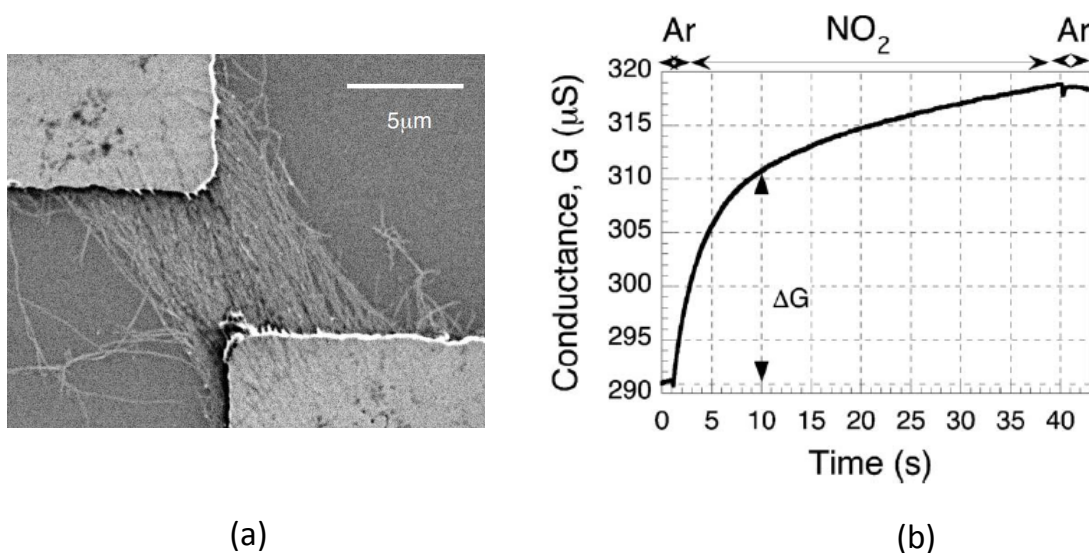


1) Rapid detection of bacteria and virus using dielectrophoretic impedance measurement



2) Fabrication of nanomaterial-based chemical sensor using dielectrophoresis



(a) SEM photograph of multilayer carbon nanotubes integrated by dielectrophoresis on the microelectrode. (b) Detection of NO₂ (concentration: 1 ppm).